

<p>RV6601 – Countersunk Head (82°)</p>	<p>RV6602 – Low Profile Flat Head</p>
<p>RV6603 & RV6604 – Dome Head (Protruding Crown)</p>	<p>RV6605 – Large Flange Head (Protruding Crown)</p>
<p>RV6606, RV6676 & RV6696 – Dome Head (Recessed Crown)</p>	<p>RV6607 – Shaveable Brazier Head</p>

A - Body Diameter • B - Head Height • D - Head Diameter • L - Rivet Body Length • F - Blind Side Protrusion

Aluminum Rivet/Aluminum Mandrel

Head Style	Rivet Dia. Nom.	GESIPA Part Number	Grip Range (Inches)	Hole Size Drill No.	Dimensions (Inches)					Typ. Strengths (lbs.)	
					D Max.	B Max.	A	L Max.	F Max.	Shear	Tensile
Countersunk Head Recessed Crown	3/16"	RV6601-6-4 RV6601-6-6 RV6601-6-8 RV6601-6-10 RV6601-6-12	.106-.250 .187-.375 .312-.500 .437-.625 .563-.750	.209-.221 #4	.195-.205	.103 Ref.	.340 Min.	.770 .895 1.020 1.145 1.250	.935 1.060 1.185 1.310 1.435	675	450
	1/4"	RV6601-8-4 RV6601-8-6 RV6601-8-8	.150-.250 .187-.375 .250-.500	.250-.263 E	.246	.147 Ref.	.452 Min.	.815 .940 1.065	1.005 1.130 1.255	1100	675
Low Profile Flat Head	5/32"	RV6602-5-4 RV6602-5-6 RV6602-5-8	.125-.250 .187-.375 .250-.500	.162-.167 #20	.161 Max.	.047	.359-.375	.790 .852 .977	.862 .987 1.112	350	225
	3/16"	RV6602-6-4 RV6602-6-6 RV6602-6-8 RV6602-6-10 RV6602-6-12	.125-.250 .187-.375 .250-.500 .375-.625 .500-.750	.209-.221 #4	.195-.205	.062	.430-.455	.770 .895 1.020 1.145 1.270	.935 1.060 1.185 1.310 1.435	675	450
	1/4"	RV6602-8-4 RV6602-8-6 RV6602-8-8 RV6602-8-10	.125-.250 .187-.375 .250-.500 .375-.625	.250-.263 1/4"	.246	.070	.532-.542	.795 .940 1.065 1.190	1.005 1.130 1.255 1.360	1100	675

Aluminum Rivet/Aluminum Mandrel

Head Style	Rivet Dia. Nom.	GESIPA Part Number	Grip Range (Inches)	Hole Size Drill No.	Dimensions (Inches)					Typ. Strengths (lbs.)		
					D Max.	B Max.	A	L Max.	F Max.	Shear	Tensile	
Dome Head Protruding Crown	5/32"	RV6604-5-4 RV6604-5-8	.067-.250 .250-.500	.162-.167 #20	.161 Max.	.074	.335-.350	.785 .972	.925 1.112	350	225	
	3/16"	RV6604-6-3 RV6604-6-4 RV6604-6-6 RV6604-6-8 RV6604-6-10 RV6604-6-12	.050-.187 .062-.250 .187-.375 .312-.500 .437-.625 .563-.750	.209-.221 #4	.195-.205	.125	.430-.455	.707 .770 .895 1.020 1.145 1.270	.844 .907 1.032 1.157 1.282 1.407	675	450	
		1/4"	RV6604-8-4 RV6604-8-6 RV6604-8-8 RV6604-8-10	.062-.250 .125-.375 .250-.500 .375-.625	.250-.263 1/4	.246 Max.	.118	.555-.565	.815 .940 1.065 1.190	1.005 1.130 1.255 1.360	1100	675
			9/32"	RV6603-9-3 RV6603-9-6 RV6603-9-10 RV6603-9-12	.032-.187 .032-.375 .250-.625 .375-.750	.308-.327 5/16	.295-.304	.150	.610-.620	0.863 1.110 1.360 1.485	1.000 1.325 1.575 1.700	1500
Large Flange Prot. Crown				RV6605-9-6 RV6605-9-10 RV6605-9-12	.042-.375 .250-.625 .375-.750	.308-.327 5/16	.295-.304	.150	.720-.765	1.110 1.360 1.485	1.325 1.575 1.700	1500
		Low Profile Head Recessed Crown		RV6606-6-3 RV6606-6-4 RV6606-6-6 RV6606-6-8 RV6606-6-10 RV6606-6-12	.050-.187 .062-.250 .187-.375 .312-.500 .437-.625 .563-.750	.209-.221 #4	.195-.205	.099	.446-.492	.707 .770 .895 1.020 1.145 1.270	.844 .907 1.032 1.157 1.282 1.407	675
	1/4"			RV6606-8-4 RV6606-8-6 RV6606-8-8 RV6606-8-10	.040-.250 .125-.375 .250-.500 .375-.625	.250-.263 1/4	.246 Max.	.116	.535-.550	.815 .940 1.065 1.190	1.005 1.130 1.255 1.380	1100

Steel Rivet/Steel Mandrel

Countersunk Head Recessed Crown	1/4"	RV6671-8-4 RV6671-8-6 RV6671-8-8	.150-.250 .187-.375 .250-.500	.250-.263 1/4	.246 Max.	.147 Ref.	.477-.485	.915 1.040 1.165	1.005 1.130 1.355	1250	950
Dome Head Recessed Crown	1/4"	RV6676-8-4 RV6676-8-6 RV6676-8-8 RV6676-8-10	.040-.250 .125-.375 .250-.500 .375-.625	.250-.263 1/4	.246 Max.	.116	.535-.550	.815 .940 1.065 1.190	1.005 1.130 1.255 1.380	1250	950

Monel Rivet/Stainless Steel Mandrel

Dome Head Recessed Crown	1/4"	RV6696-8-4 RV6696-8-6 RV6696-8-8 RV6696-8-10	.040-.250 .125-.375 .250-.500 .375-.625	.250-.263 1/4	.246 Max.	.116	.535-.550	.815 .940 1.065 1.190	1.005 1.130 1.255 1.360	2100	1455
--------------------------	------	---	--	------------------	--------------	------	-----------	--------------------------------	----------------------------------	------	------

RV66 0 4 - 6 - 8 W

Olympic Bulb-Tite _____
 Rivet Material _____
 0 - Aluminum
 7 - Steel
 9 - Monel

Washer for Weather Resistance _____
 Maximum Grip (in 1/16") _____
 Nominal Diameter (in 1/32") _____
 Head Style _____

1 - Countersunk
 2 - Flat Head
 3 & 9 - Dome Head (Protruding Crown)

4 - Dome Head (Protruding Crown)
 5 - Large Flange Head
 6 - Dome Head (Recessed Crown)
 7 - Dome Head (Shaveable)

Head Style	Rivet Dia. Nom.	GESIPA Part Number	Grip Range	Hole Size Drill No.	Dimensions (Inches)					Typ. Strengths (lbs.)	
					D	B Max.	A	L Max.	F Max.	Shear	Tensile
Shaveable Brazier Head	5/32"	RV6607-5-5	.020-.312	.162-.167 #20	.161 Max.	.077	.296-.328	.800	.920	350	225
	3/16"	RV6607-6-3	.020-.187	.209-.221 #4	.195-.205	.105	.446-.492	.707	.839	675	450
		RV6607-6-4	.500-.250					.770	.935		
		RV6607-6-6	.050-.375					.895	1.060		
RV6607-6-8		.050-.500	#4	1.020				1.185			
RV6607-6-10		.500-.625		1.145				1.310			
RV6607-6-12	.500-.750		1.270	1.435							
1/4"	RV6607-8-8	.050-.500	.250-.263 1/4	.246 Max.	.125	.446-.492	1.065	1.255	1100	675	

Shaveable Series

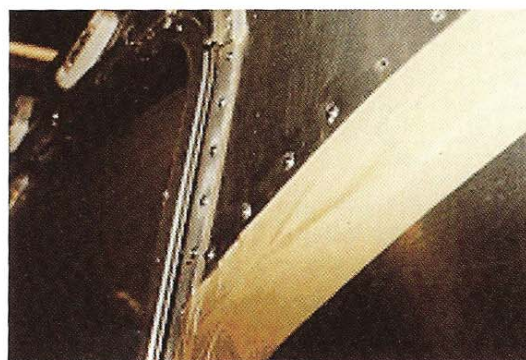
The Shaveable series of Bulb-tite rivets are designed for use in applications where solid "bucked" type rivets are commonly used such as truck/trailer body assembly or repair. The Shaveable Bulb-tite simplifies repairs made to solid riveted assemblies, as rivet replacement does not require access to the blind side of the application. The Bulb-tite's large blindside footprint functions well in rivet holes that have become elongated or too large to allow use of a solid rivet. Simply install the Bulb-tite and finish the rivet head with an Olympic head-shaving tool. The shaved head profile perfectly matches the solid brazier head rivets used elsewhere in the assembly. Shaveable Bulb-tites are available in 5/32", 3/16" and 1/4" diameters and can be installed with most standard blind rivet tools. A special tool nose tip is not required. The installed rivet's mandrel is designed to break high, leaving an exposed mandrel plug extending above the set fastener's head. The remaining mandrel protrusion is snipped off using the RV57 mandrel trimming tool. Finally, the rivet head is shaved using the HS310 rivet head shaver, leaving a finished rivet head that matches solid rivets in appearance.



1. PROTRUDING MANDREL IS SNIPPED FLUSH WITH RIVET'S HEAD.



2. PROPER SIZED SHAVER TOOL, INSTALLED IN A STANDARD 1/4" DRILL, SHAVES RIVET HEAD.



3. SHAVED BULB-TITE RIVETS MATCH SOLID RIVETS PERFECTLY!