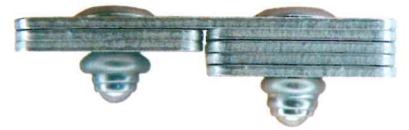
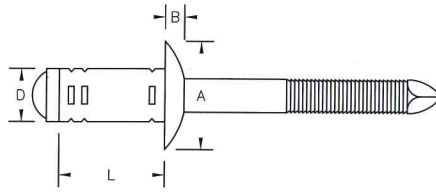


G-BULB (STEEL)



GESIPA's new G-Bulb structural blind rivet features a large blind side closing head for better support in thinner application materials. A locked mandrel core provides high shear strength.

Steel Rivet/Steel Mandrel

Head Style	Rivet Dia. Nom.	GESIPA Part Number	Grip Range (Inches)	Hole Size Drill No.	Dimensions (Inches)				Min. Strength (lbs.)	
					D Max.	B Max.	A	L Max.	Shear	Tensile
Dome	3/16"	GSMD62SGB	.059-.138	.197-.205	.195	.052	.342-.374	.413	809	786
		GSMD64SGB	.138-.236					.532	899	
		GSMD65SGB	.236-.315					.610	1,259	
	1/4"	GSMD83SGB	.079-.177	.260-.276	.252	.118	.453-.512	.532	1,910	1,798
		GSMD85SGB	.177-.276					.689	2,472	
		GSMD87SGB	.276-.413					.807	2,585	

OLYMPIC BULB-TITE RIVETS



More than forty years ago the first Bulb-tite was developed to solve application requirements in the Pre-Engineered Metal Building industry. Since that time the Bulb-tite product line has been expanded to meet application requirements in a wide range of industries. The Bulb-tite rivet body folds into three separate legs forming a large blind-side head. This large bearing head evenly distributes the Bulb-tite's high clamp force in soft, thin or brittle materials while providing high pull-through resistance. The Bulb-tite's wide grip range enables a single Bulb-tite to work in a greater variation of thickness. Some versions of the Bulb-tite feature a special flush break mandrel that effectively seals the rivet bore and adds greater shear strength. See note for special installation tool nose tip requirements.*



*Note - Special Bulb-tite installation tool nosepiece is required for use with Bulb-tite rivets: RV6601, RV6603, RV6604, RV6605, RV6606, RV6671, RV6676 and RV6696 series.