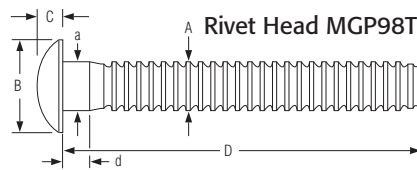
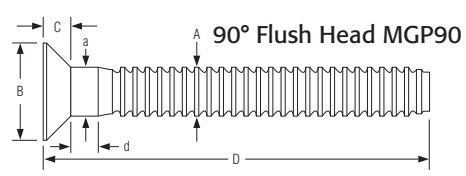
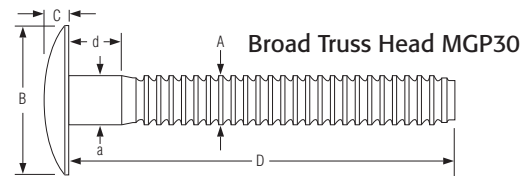
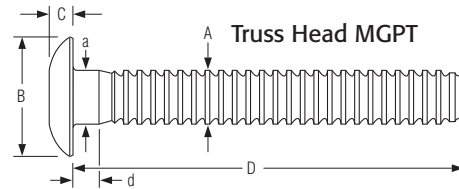
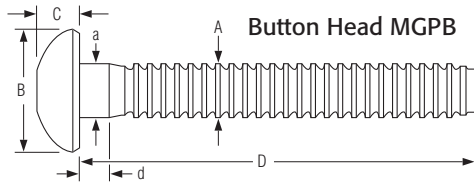


# Data and dimensions

## Head Style Options



### Button Head Dimensions

Diameter	Grip Number	Grip Range	Hole Size max	A ref	B	C	D	a max	d ref
6 (3/16")	10	.062-0.625	.219	.186	.355-.395	.109-.129	1.778-1.828	.192	-
	20	.312-1.250	.219	.186	.355-.395	.109-.129	2.360-2.410	.259	.312
8 (1/4")	10	.125-0.625	.281	.248	.480-.520	.134-.154	1.945-2.085	.259	.125
	20	.312-1.250	.281	.248	.480-.520	.134-.154	2.580-2.680	.259	.312
10 (5/16")	12	.125-0.750	.359	.311	.595-.655	.176-.206	2.330-2.430	.322	*
	22	.625-1.375	.359	.311	.595-.655	.176-.206	2.830-2.930	.322	.550
12 (3/8")	14	.188-0.875	.422	.374	.720-.780	.220-.250	2.865-2.965	.385	.188
	26	.812-1.625	.422	.374	.720-.780	.220-.250	3.490-3.590	.385	.810

* Steel	-
Aluminum	.100

### Truss Head Dimensions

Diameter	Grip Number	Grip Range	Hole Size max	A ref	B	C	D	a max	d ref
8 (1/4")	10	.062-0.625	.281	.248	.542-.582	.100-.120	1.955-2.055	.259	.125
	20	.312-1.250	.281	.248	.542-.582	.100-.120	2.550-2.650	.259	.312
10 (5/16")	12	.125-0.750	.359	.311	.698-.802	.119-.149	2.330-2.430	.322	**
	22	.625-1.375	.359	.311	.698-.802	.119-.149	2.830-2.930	.322	.550
12 (3/8")	14	.188-0.875	.422	.374	.720-.905	***	2.865-2.965	.385	.188
	26	.812-1.625	.422	.374	.720-.905	***	3.490-3.590	.385	.810

** Steel	-
Aluminum	.150-.180

*** Steel	.145-.175
Aluminum	.180-.210

### Broad Truss Head Dimensions

Diameter	Grip Number	Grip Range	Hole Size max	A ref	B	C	D	a max	d ref
8 (1/4")	10	.156-0.625	.281	.248	*	.135-.165	1.955-2.055	.259	.125
	24	.625-1.500	.281	.248	*	.135-.165	2.800-2.900	.259	.562
12 (3/8")	14	.188-0.875	.422	.374	1.179-1.259	.185-.215	3.365-3.465	.385	.680
	24	.688-1.500	.422	.374	1.179-1.259	.185-.215	3.865-3.965	.385	1.180

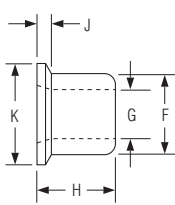
* Steel	0.898-0.978
Aluminum	1.023-1.103

## 90° Flush Head Dimensions

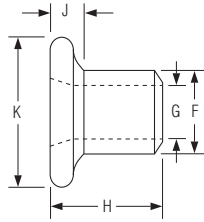
Diameter	Grip Number	Grip Range	Hole Size max	A ref	B	C	D	a max	d ref
6 (3/16")	10	.062-0.625	.219	.186	.321-.361	.090-.105	1.778-1.828	.196	.157
	20	.312-1.250	.219	.186	.321-.361	.075-.090	2.360-2.410	.196	.408
8 (1/4")	10	.125-0.625	.281	.248	.425-.475	.115-.130	1.955-2.055	.259	.210
	20	.312-1.250	.281	.248	.425-.475	.100-.115	2.550-2.650	.259	.422
10 (5/16")	12	.125-0.750	.359	.311	.542-.594	.149-.162	2.330-2.430	.322	.227
	22	.625-1.375	.359	.311	.542-.594	.129-.142	2.830-2.930	.322	.727
12 (3/8")	14	.250-0.875	.422	.374	.652-.712	.171-.201	2.865-2.965	.385	.188
	26	.812-1.625	.422	.374	.652-.712	.146-.176	3.490-3.590	.385	.810

## Rivet Head Dimensions

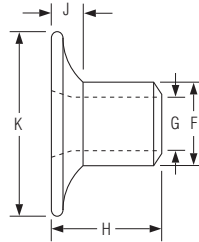
Diameter	Grip Number	Grip Range	Hole Size max	A ref	B	C	D	a max	d ref
6 (3/16")	10	.062-0.625	.219	.186	.448-488	.088-.108	1.778-1.828	.196	-
	20	.312-1.250	.219	.186	.448-488	.088-.108	2.360-2.410	.196	.312



Standard Flange MGC



Medium Flange MGCS



Wide Flange MGCW

## Collar Dimensions

Collar	Diameter	F	G	H	J ref	K
MCG	3/16"	.305-.315	*	.267 - .283	.050	.360 - .390
	1/4"	.395-.405	.250 - .260	.367 - .383	.062	.485 - .515
	5/16"	.500-.510	.312 - .320	.428 - .448	.075	.605 - .645
	3/8"	.602-.612	.375 - .385	.495 - .515	.093	.730 - .770
MCGS	3/16"	.305-.315	*	.297 - .303	.100	.490 - .540
MCCW	3/16"	.305-.315	*	.290 - .320	.100	.635 - .760
	1/4"	.395-.405	.250-.260	.427 - .467	.130	.850 -1.010

* Steel	.187-.197
Aluminum	.194-.204

## Installed Values in Nominal Grip (lbs.)

Diameter		Aluminum		Steel		Diameter		Aluminum		Steel	
		Minimum	Typical	Minimum	Typical			Minimum	Typical	Minimum	Typical
3/16"	Shear	750	1000	1725	2000	5/16"	Shear	2200	2700	3000	3900
	Tensile	900	1300	1650	2700		Tensile	2500	4100	4400	6200
	Clamp	550	800	1025	1500		Clamp	1600	2200	2300	2900
1/4"	Shear	1200	1600	2200	2700	3/8"	Shear	3000	3900	4200	6000
	Tensile	1620	2500	2950	4000		Tensile	4000	5500	6000	9000
	Clamp	950	1400	1350	2000		Clamp	2400	3200	3200	4000