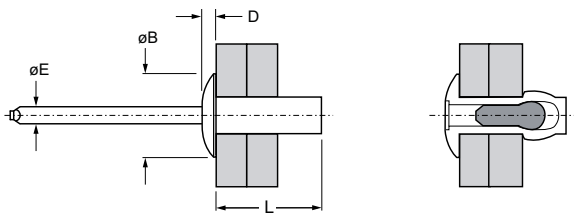

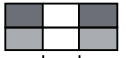
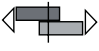





English	Français	Deutsch	Italiano	Español
Dome head	Tête plate	Flachrundkopf	Testa Tonda	Cabeza alomada
Body: Aluminum* Natural	Corps: Aluminium* Brut	Hülse: Aluminium* Unbehandelt	Corpo: Alluminio* Nessuna finitura	Cuerpo: Aluminio* Natural
Body: Aluminum Natural	Corps: Aluminium Brut	Hülse: Aluminium Unbehandelt	Corpo: Alluminio Nessuna finitura	Cuerpo: Aluminio Natural

*: 1100



ø nom.					L ref.	øE ref.	øB max.	D max.	 lbf (kN) ¹⁾	 lbf (kN) ¹⁾	Part No.
	min.	max.	min.	max.							
1/8" (3.2)	.032 (0.8)	.062 (1.6)	.129 (3.28)	.133 (3.38)	.237 (6.0)	.072 (1.8)	.248 (6.3)	.051 (1.3)	105 (0.47)	150 (0.67)	AD 41 AH
	.063 (1.6)	.125 (3.2)			.301 (7.7)						AD 42 AH
	.126 (3.2)	.187 (4.8)			.362 (9.2)						AD 43 AH
	.188 (4.8)	.250 (6.4)			.425 (10.8)						AD 44 AH
5/32" (4.0)	.126 (3.2)	.187 (4.8)	.160 (4.06)	.164 (4.17)	.377 (9.6)	.090 (2.3)	.327 (8.4)	.066 (1.7)	155 (0.69)	240 (1.07)	AD 53 AH
	.188 (4.8)	.250 (6.4)			.440 (11.2)						AD 54 AH
	.251 (6.4)	.312 (7.9)			.502 (12.8)						AD 55 AH
3/16" (4.8)	.063 (1.6)	.125 (3.2)	.192 (4.88)	.196 (4.98)	.330 (8.4)	.108 (2.7)	.393 (10.0)	.081 (2.1)	220 (0.98)	310 (1.38)	AD 62 AH
	.126 (3.2)	.250 (6.4)			.455 (11.6)						AD 64 AH
	.251 (6.4)	.375 (9.5)			.580 (14.7)						AD 66 AH
	.376 (9.5)	.500 (12.7)			.705 (17.9)						AD 68 AH

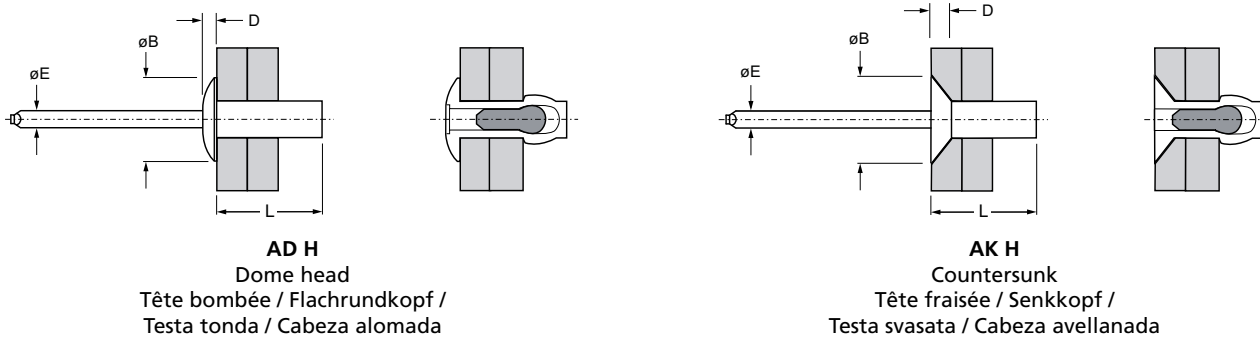
dimensions in inches and (mm) / en pouces et (millimètre) / alle Maße in Zoll und (mm) / in pollici e (millimetri) / en pulgadas y (milímetros)

1) typical values / valeurs moyennes / typische Werte / Valori tipici / valores típicos



English	Français	Deutsch	Italiano	Español
Body: Aluminum* Natural	Corps: Aluminium* Brut	Hülse: Aluminium* Blank	Corpo: Alluminio* Nessuna finitura	Cuerpo: Aluminio* Natural
Stem: Steel Protective coating	Tige: Acier Revêtement de protection	Dorn: Stahl Schutzüberzug	Gambo: Acciaio Rivestimento protettivo	Vástago: Acero Revestimiento preservador

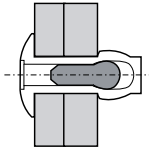
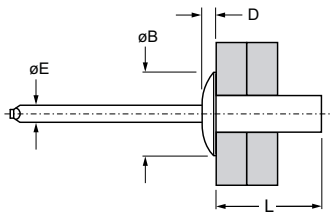
* 5056



ø nom.					øE ref.	AD H			AK H				
	min.	max.	min.	max.		L ref.	øB max.	D max.	Part No.	L ref.	øB max.	D max.	Part No.
1/8" (3.2)	.032 (0.8)	.062 (1.6)	.129 (3.28)	.133 (3.38)	.064 (1.6)	.237 (6.0)	.248 (6.3)	.051 (1.3)	AD 41 H	.277 (7.0)	.245 (6.3)	.055 (1.4)	AK 41 H
	.063 (1.6)	.125 (3.2)				.301 (7.7)			AD 42 H	.341 (8.7)			AK 42 H
	.126 (3.2)	.187 (4.8)				.362 (9.2)			AD 43 H	.402 (10.2)			AK 43 H
	.188 (4.8)	.250 (6.4)				.425 (10.8)	AD 44 H	.466 (11.8)	AD 45 H	.528 (13.4)			AK 45 H
	.251 (6.4)	.312 (7.9)				.487 (12.4)	AD 46 H	.591 (15.0)	AD 48 H				AK 46 H
	.313 (7.9)	.375 (9.5)				.550 (14.0)							
	.376 (9.5)	.500 (12.7)				.675 (17.2)							
5/32" (4.0)	.063 (1.6)	.125 (3.2)	.160 (4.06)	.164 (4.17)	.086 (2.2)	.315 (8.0)	.327 (8.4)	.066 (1.7)	AD 52 H	.370 (9.4)	.327 (8.4)	.065 (1.7)	AK 52 H
	.126 (3.2)	.187 (4.8)				.377 (9.6)			AD 53 H	.432 (11.0)			AK 53 H
	.188 (4.8)	.250 (6.4)				.440 (11.2)			AD 54 H	.495 (12.6)			AK 54 H
	.251 (6.4)	.312 (7.9)				.502 (12.8)			AD 55 H	.558 (14.2)			AK 55 H

dimensions in inches and (mm) / en pouces et (millimètre) / alle Maße in Zoll und (mm) / in pollici e (millimetri) / en pulgadas y (milímetros)

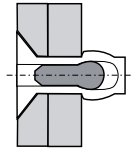
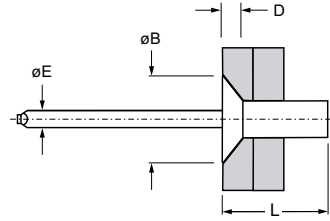
Closed End AD H / AK H Series
Aluminum / Steel



AD H

Dome head

Tête bombée / Flachrundkopf /
Testa tonda / Cabeza alomada



AK H

Countersunk

Tête fraisée / Senkkopf /
Testa svasata / Cabeza avellanada

ø nom.					øE ref.	AD H				AK H			
	min.	max.	min.	max.		L ref.	øB max.	D max.	Part No.	L ref.	øB max.	D max.	Part No.
3/16" (4.8)	.063 (1.6)	.125 (3.2)	.192 (4.88)	.196 (4.98)	.104 (2.6)	.330 (8.4)	.393 (10.0)	.081 (2.1)	AD 62 H	.395 (10.0)	.395 (10.1)	.075 (2.0)	AK 62 H
	.126 (3.2)	.187 (4.8)				.392 (10.0)			AD 63 H				
	.188 ¹⁾ (4.8) ¹⁾	.250 (6.4)				.455 (11.6)			AD 64 H	.520 (13.2)			AK 64 H
	.251 (6.4)	.312 (7.9)				.517 (13.1)			AD 65 H				
	.313 ²⁾ (7.9) ²⁾	.375 (9.5)				.580 (14.7)			AD 66 H	.645 (16.4)			AK 66 H
	.376 (9.5)	.500 (12.7)				.705 (17.9)			AD 68 H				
	.501 (12.7)	.625 (15.9)				.865 (22.0)			AD 610 H				
1/4" (6.4)	.126 (3.2)	.250 (6.4)	.257 (6.53)	.261 (6.63)	.144 (3.7)	.485 (12.3)	.525 (13.4)	.099 (2.6)	AD 84 H				
	.251 (6.4)	.375 (9.5)				.610 (15.5)			AD 86 H				

dimensions in inches and (mm) / en pouces et (millimètre) / alle Maße in Zoll und (mm) / in pollici e (millimetri) / en pulgadas y (milímetros)
1) AK 64 H: .126 (3.2) 2) AK 66 H: .251 (6.4)

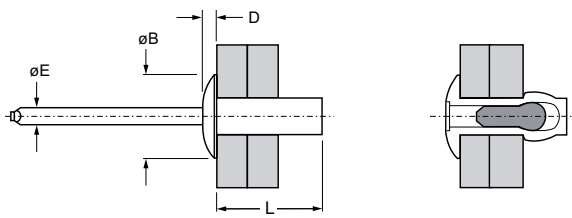
ø nom.		
	lbf (kN) ¹⁾	lbf (kN) ¹⁾
1/8" (3.2)	305 (1.36)	385 (1.71)
5/32" (4.0)	430 (1.91)	605 (2.69)
3/16" (4.8)	575 (2.56)	840 (3.74)
1/4" (6.4)	900 (4.00)	1100 (4.89)

1) typical values / valeurs moyennes / typische Werte /
Valori tipici / valores típicos



English	Français	Deutsch	Italiano	Español
Body: Aluminum* Natural	Corps: Aluminium* Brut	Hülse: Aluminium* Blank	Corpo: Alluminio* Nessuna finitura	Cuerpo: Aluminio* Natural
Stem: Stainless steel Natural	Tige: Inox Brut	Dorn: Edelstahl Unbehandelt	Gambo: Acciaio inox Nessuna finitura	Vástago: Acero inoxidable Natural

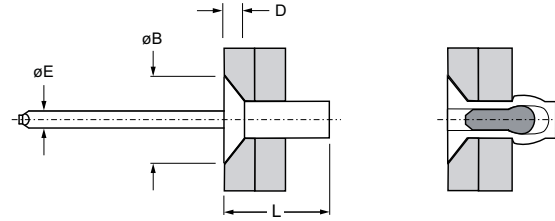
* 5056



AD SSH

Dome head

Tête bombée / Flachrundkopf /
Testa tonda / Cabeza alomada



AK SSH

Countersunk

Tête fraisée / Senkkopf /
Testa svasata / Cabeza avellanada

Ø nom.					ØE ref.	AD SSH				AK SSH			
	min.	max.	min.	max.		L ref.	ØB max.	D max.	Part No.	L ref.	ØB max.	D max.	Part No.
1/8" (3.2)	.126 (3.2)	.187 (4.8)	.129 (3.28)	.133 (3.38)	.064 (1.6)					.402 (10.2)	.245 (6.3)	.055 (1.4)	AK 43 SSH
5/32" (4.0)	.126 (3.2)	.187 (4.8)	.160 (4.06)	.164 (4.17)	.086 (2.2)					.432 (11.0)	.327 (8.4)	.065 (1.7)	AK 53 SSH
	.188 (4.8)	.250 (6.4)								.495 (12.6)			
3/16" (4.8)	.063 (1.6)	.125 (3.2)	.192 (4.88)	.196 (4.98)	.104 (2.6)				AD 62 SSH	.395 (10.0)	.395 (10.1)	.075 (2.0)	AK 62 SSH
	.126 (3.2)	.250 (6.4)						AD 64 SSH	.520 (13.2)	AK 64 SSH			
	.251 (6.4)	.375 (9.5)						AD 66 SSH					
	.376 (9.5)	.500 (12.7)						AD 68 SSH					

dimensions in inches and (mm) / en pouces et (millimètre) / alle Maße in Zoll und (mm) / in pollici e (millimetri) / en pulgadas y (milímetros)

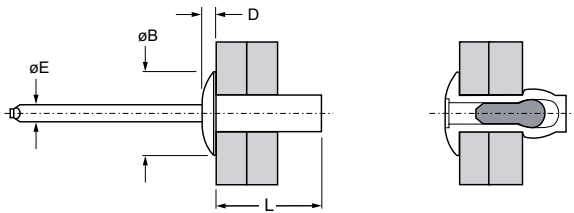
Ø nom.		
	lbf (kN) ¹⁾	lbf (kN) ¹⁾
1/8" (3.2)	240 (1.07)	280 (1.25)
5/32" (4.0)	350 (1.56)	480 (2.14)
3/16" (4.8)	575 (2.56)	840 (3.74)

1) typical values / valeurs moyennes / typische Werte /
Valori tipici / valores típicos



English	Français	Deutsch	Italiano	Español
Dome head	Tête plate	Flachrundkopf	Testa Tonda	Cabeza alomada
Body: Stainless steel* Natural	Corps: Inox* Brut	Hülse: Edelstahl* Unbehandelt	Corpo: Acciaio inox* Nessuna finitura	Cuerpo: Acero inoxidable* Natural
Stem: Stainless steel Natural	Tige: Inox Brut	Dorn: Edelstahl Unbehandelt	Gambo: Acciaio inox Nessuna finitura	Vástago: Acero inoxidable Natural

*: 300 Series



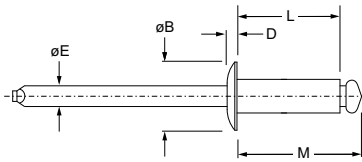
Ø nom.					L ref.	ØE ref.	ØB max.	D max.			Part No.
	min.	max.	min.	max.							
1/8" (3.2)	.0 (0)	.063 (1.6)	.130 (3.3)	.134 (3.4)	.260 (6.6)	.078 (2.0)	.262 (6.7)	.039 (1.0)	472 (2.10)	499 (2.22)	SSD 41 SSH
	.063 (1.6)	.125 (3.2)			.315 (8.0)						SSD 42 SSH
	.125 (3.2)	.190 (4.8)			.382 (9.7)						SSD 43 SSH
	.188 (4.8)	.252 (6.4)			.445 (11.3)						SSD 44 SSH
	.250 (6.4)	.311 (7.9)			.508 (12.9)						SSD 45 SSH
5/32" (4.0)	.0 (0)	.125 (3.2)	.161 (4.09)	.165 (4.19)	.339 (8.6)	.093 (2.4)	.338 (8.6)	.042 (1.1)	742 (3.30)	899 (4.00)	SSD 52 SSH
	.125 (3.2)	.190 (4.8)			.402 (10.2)						SSD 53 SSH
	.188 (4.8)	.252 (6.4)			.465 (11.8)						SSD 54 SSH
	.250 (6.4)	.311 (7.9)			.528 (13.4)						SSD 55 SSH
3/16" (4.8)	.0 (0)	.125 (3.2)	.193 (4.9)	.197 (5.0)	.362 (9.2)	.117 (3.0)	.393 (10.0)	.049 (1.25)	966 (4.30)	990 (4.40)	SSD 62 SSH
	.125 (3.2)	.189 (4.8)			.425 (10.8)						SSD 63 SSH
	.188 (4.8)	.252 (6.4)			.492 (12.5)						SSD 64 SSH
	.250 (6.4)	.374 (9.5)			.610 (15.5)						SSD 66 SSH
	.371 (9.5)	.500 (12.7)			.728 (18.5)						SSD 68 SSH

dimensions in inches and (mm) / en pouces et (millimètre) / alle Maße in Zoll und (mm) / in pollici e (millimetri) / en pulgadas y (milímetros)
1) typical values / valeurs moyennes / typische Werte / Valori tipici / valores típicos

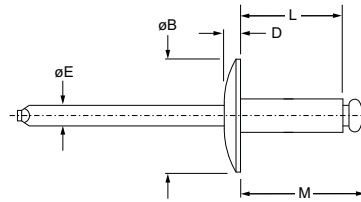


English	Français	Deutsch	Italiano	Español
Body: Aluminum* Natural	Corps: Aluminium* Brut	Hülse: Aluminium* Unbehandelt	Corpo: Alluminio* Nessuna finitura	Cuerpo: Aluminio* Natural
Body: Aluminum Natural	Corps: Aluminium Brut	Hülse: Aluminium Unbehandelt	Corpo: Alluminio Nessuna finitura	Cuerpo: Aluminio Natural

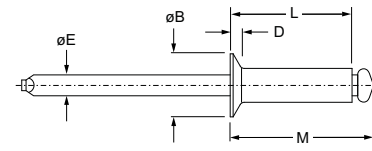
*: 5052




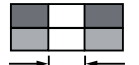
AD ■ ABS
Dome head
Tête bombée / Flachrundkopf /
Testa tonda / Cabeza alomada



AD ■ ABS LF
Large flange
Tête large / Flachrundkopf, extragroß /
Testa larga / Cabeza ancha

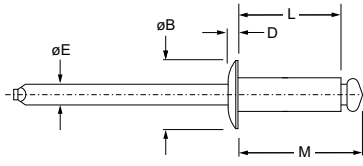


AK ■ ABS
Countersunk
Tête fraisée / Senkkopf /
Testa svasata / Cabeza avellanada

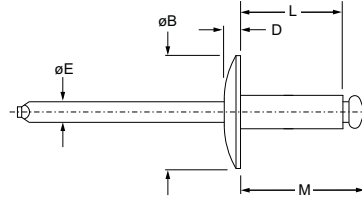
Ø nom.					L ref.	M ref.	ØE ref.	AD ■ ABS			AD ■ ABS LF			AK ■ ABS				
	min.	max.	min.	max.				ØB max.	D max.	Part No. ■	ØB max.	D max.	Part No. ■	ØB max.	D max.	Part No. ■		
3/32" (2.4)	.032 (0.8)	.125 (3.2)	.097 (2.46)	.100 (2.54)	.225 (5.7)	.325 (8.3)	.057 (1.5)	.198 (5.1)	.032 (0.9)	32								
	.126 (3.2)	.250 (6.4)			.350 (8.9)	.450 (11.4)				34								
	.251 (6.4)	.375 (9.5)			.475 (12.1)	.575 (14.6)				36								
1/8" (3.2)	.032 (0.8)	.062 (1.6)	.129 (3.28)	.133 (3.38)	.188 (4.8)	.308 (7.8)	.076 (1.9)	.262 (6.7)	.040 (1.1)	41								
	.063 (1.6)	.125 (3.2)			.250 (6.4)	.370 (9.4)				42		42				42		
	.126 (3.2)	.187 (4.8)			.313 (8.0)	.433 (11.0)				43		43				43		
	.188 (4.8)	.250 (6.4)			.375 (9.5)	.495 (12.6)				44		44	.390 (10.0)	.046 (1.2)		.233 (6.0)	.051 (1.3)	44
	.251 (6.4)	.312 (7.9)			.438 (11.1)	.558 (14.2)				45								45
	.313 (7.9)	.375 (9.5)			.500 (12.7)	.620 (15.7)				46		46						46
	.376 (9.5)	.500 (12.7)			.625 (15.9)	.745 (18.9)				48								
	.501 (12.7)	.625 (15.9)			.750 (19.1)	.870 (22.1)				410								

dimensions in inches and (mm) / en pouces et (millimètre) / alle Maße in Zoll und (mm) / in pollici e (millimetri) / en pulgadas y (milímetros)

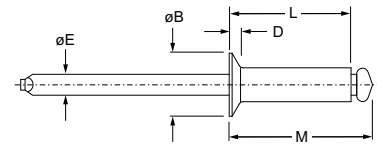
Open End AD ABS / AK ABS Series
Aluminum / Aluminum



AD ■ ABS
Dome head
Tête bombée / Flachrundkopf /
Testa tonda / Cabeza alomada



AD ■ ABS LF
Large flange
Tête large / Flachrundkopf, extragroß /
Testa larga / Cabeza ancha

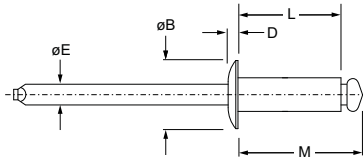


AK ■ ABS
Countersunk
Tête fraisée / Senkkopf /
Testa svasata / Cabeza avellanada

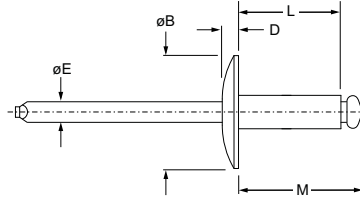
ø nom.	■		■		L ref.	M ref.	øE ref.	AD ■ ABS			AD ■ ABS LF			AK ■ ABS				
	min.	max.	min.	max.				øB max.	D max.	Part No. ■	øB max.	D max.	Part No. ■	øB max.	D max.	Part No. ■		
5/32" (4.0)	.063 (1.6)	.125 (3.2)	.160 (4.06)	.164 (4.17)	.275 (7.0)	.415 (10.5)	.095 (2.4)	.328 (8.4)	.047 (1.2)	52	.488 (12.4)	.056 (1.5)	54	56	58			
	.126 (3.2)	.187 (4.8)			.338 (8.6)	.478 (12.1)				53						54	56	58
	.188 (4.8)	.250 (6.4)			.400 (10.2)	.540 (13.7)				54								
	.251 (6.4)	.375 (9.5)			.525 (13.3)	.665 (16.9)				56								
	.376 (9.5)	.500 (12.7)			.650 (16.5)	.790 (20.1)				58								
3/16" (4.8)	.063 (1.6)	.125 (3.2)	.192 (4.88)	.196 (4.98)	.300 (7.6)	.460 (11.7)	.114 (2.9)	.393 (10.0)	.055 (1.4)	62	.650 (16.6)	.083 (2.2)	64	66	68			
	.126 (3.2)	.250 (6.4)			.425 (10.8)	.585 (14.9)				64						64	66	68
	.251 (6.4)	.375 (9.5)			.550 (14.0)	.710 (18.0)				66								
	.376 (9.5)	.500 (12.7)			.675 (17.2)	.835 (21.2)				68								
	.501 (12.7)	.625 (15.9)			.800 (20.3)	.960 (24.4)				610								
	.626 (15.9)	.750 (19.1)			.925 (23.5)	1.085 (27.6)				612								
	.751 (19.1)	.875 (22.2)			1.050 (26.7)	1.210 (30.7)				614								
	.876 (22.3)	1.000 (25.4)			1.175 (29.8)	1.335 (33.9)				616								

dimensions in inches and (mm) / en pouces et (millimètre) / alle Maße in Zoll und (mm) / in pollici e (millimetri) / en pulgadas y (milímetros)

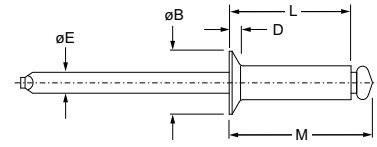
Open End AD ABS / AK ABS Series
Aluminum / Aluminum



AD ■ ABS
Dome head
Tête bombée / Flachrundkopf /
Testa tonda / Cabeza alomada



AD ■ ABS LF
Large flange
Tête large / Flachrundkopf, extragroß /
Testa larga / Cabeza ancha



AK ■ ABS
Countersunk
Tête fraisée / Senkkopf /
Testa svasata / Cabeza avellanada

ø nom.					L ref.	M ref.	øE ref.	AD ■ ABS			AD ■ ABS LF			AK ■ ABS		
	min.	max.	min.	max.				øB max.	D max.	Part No. ■	øB max.	D max.	Part No. ■	øB max.	D max.	Part No. ■
1/4" (6.4)	.062 (1.6)	.125 (3.2)	.257 (6.53)	.261 (6.63)	.350 (8.9)	.585 (14.9)	.151 (3.8)	.525 (13.4)	.073 (1.85)	82						
	.126 (3.2)	.250 (6.4)			.475 (12.1)	.710 (18.0)				84						
	.251 (6.4)	.375 (9.5)			.600 (15.2)	.835 (21.2)				86						
	.376 (9.5)	.500 (12.7)			.725 (18.4)	.960 (24.4)				88						
	.501 (12.7)	.625 (15.9)			.850 (21.6)	1.085 (27.6)				810						
	.626 (15.9)	.750 (19.1)			.975 (24.8)	1.210 (30.7)				812						
	.876 (22.3)	1.000 (25.4)			1.225 (31.1)	1.460 (37.1)				816						

dimensions in inches and (mm) / en pouces et (millimètre) / alle Maße in Zoll und (mm) / in pollici e (millimetri) / en pulgadas y (milímetros)

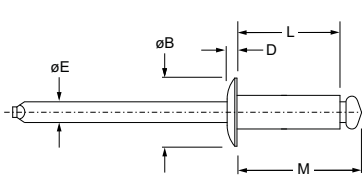
ø nom.		
	lbf (kN) ¹⁾	lbf (kN) ¹⁾
3/32" (2.4)	85 (0.38)	135 (0.60)
1/8" (3.2)	155 (0.69)	235 (1.05)
5/32" (4.0)	225 (1.00)	350 (1.56)
3/16" (4.8)	315 (1.40)	500 (2.22)
1/4" (6.4)	600 (2.67)	750 (3.34)

1) typical values / valeurs moyennes / typische Werte / Valori tipici / valores típicos

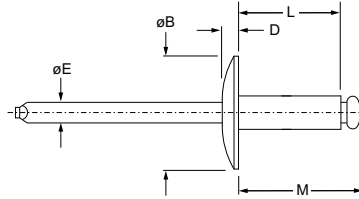


English	Français	Deutsch	Italiano	Español
Body: Aluminum* Natural	Corps: Aluminium* Brut	Hülse: Aluminium* Unbehandelt	Corpo: Alluminio* Nessuna finitura	Cuerpo: Aluminio* Natural
Stem: Steel Protective coating	Tige: Acier Revêtement de protection	Dorn: Stahl Schutzüberzug	Gambo: Acciaio Rivestimento protettivo	Vástago: Acero Revestimiento preservador

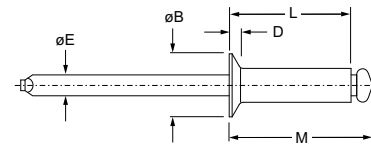
*: 5056



AD ■ BS
Dome head
Tête bombée / Flachrundkopf /
Testa tonda / Cabeza alomada



AD ■ BS LF
Large flange
Tête large / Flachrundkopf, extragroß /
Testa larga / Cabeza ancha



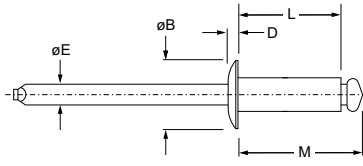
AK ■ BS
Countersunk
Tête fraisée / Senkkopf /
Testa svasata / Cabeza avellanada

ø nom.	■		■		L ref.	M ref.	øE ref.	AD ■ BS			AD ■ BS LF			AK ■ BS					
	min.	max.	min.	max.				øB max.	D max.	Part No.	øB max.	D max.	Part No.	øB max.	D max.	Part No.			
3/32" (2.4)	.031 (0.8)	.125 (3.2)	.097 (2.46)	.100 (2.54)	.225 (5.7)	.325 (8.3)	.057 (1.5)	.198 (5.1)	.032 (0.9)	32									
	.126 (3.2)	.250 (6.4)			.350 (8.9)	.450 (11.4)											34		
1/8" (3.2)	.032 (0.8)	.062 (1.6)	.129 (3.28)	.133 (3.38)	.188 (4.8)	.308 (7.8)	.076 (1.9)	.262 (6.7)	.040 (1.1)	41	.390 (10.0)	.065 (1.7)	44	.233 (6.0)	.051 (1.3)	44			
	.063 (1.6)	.125 (3.2)			.250 (6.4)	.370 (9.4)											42	42	42
	.126 (3.2)	.187 (4.8)			.313 (8.0)	.433 (11.0)											43	43	43
	.188 (4.8)	.250 (6.4)			.375 (9.5)	.495 (12.6)											44	44	44
	.251 (6.4)	.312 (7.9)			.438 (11.1)	.558 (14.2)											45	45	45
	.313 (7.9)	.375 (9.5)			.500 (12.7)	.620 (15.7)											46	46	46
	.376 (9.5)	.500 (12.7)			.625 (15.9)	.745 (18.9)											48	48	48
	.501 (12.7)	.625 (15.9)			.750 (19.1)	.870 (22.1)											410		
5/32" (4.0)	.063 (1.6)	.125 (3.2)	.160 (4.06)	.164 (4.17)	.275 (7.0)	.415 (10.5)	.095 (2.4)	.328 (8.4)	.047 (1.2)	52	.488 (12.4)	.075 (1.9)	54	.296 (7.6)	.063 (1.6)	52			
	.126 (3.2)	.187 (4.8)			.338 (8.6)	.478 (12.1)											53		
	.188 ¹⁾ (4.8) ¹⁾	.250 (6.4)			.400 (10.2)	.540 (13.7)											54	54	54
	.251 (6.4)	.375 (9.5)			.525 (13.3)	.665 (16.9)											56		56
	.376 (9.5)	.500 (12.7)			.650 (16.5)	.790 (20.1)											58		

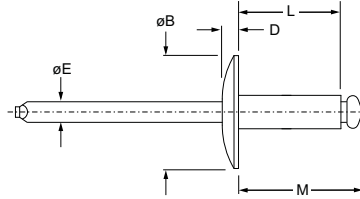
dimensions in inches and (mm) / en pouces et (millimètre) / alle Maße in Zoll und (mm) / in pollici e (millimetri) / en pulgadas y (milímetros)
1) AK 54 BS: .126 (3.2)

Open End AD BS / AK BS Series

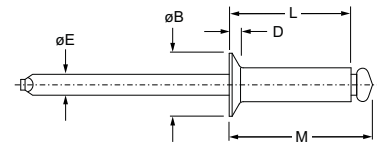
Aluminum / Steel



AD ■ BS
Dome head
Tête bombée / Flachrundkopf /
Testa tonda / Cabeza alomada





AD ■ BS LF
Large flange
Tête large / Flachrundkopf, extragroß /
Testa larga / Cabeza ancha



AK ■ BS
Countersunk
Tête fraisée / Senkkopf /
Testa svasata / Cabeza avellanada

ø nom.	Dome head		Large flange		L ref.	M ref.	øE ref.	AD ■ BS			AD ■ BS LF			AK ■ BS		
	min.	max.	min.	max.				øB max.	D max.	Part No.	øB max.	D max.	Part No.	øB max.	D max.	Part No.
3/16" (4.8)	.063 (1.6)	.125 (3.2)	.192 (4.88)	.196 (4.98)	.300 (7.6)	.460 (11.7)	.114 (2.9)	.393 (10.0)	.055 (1.4)	62	.650 (16.6)	.092 (2.4)	62	.363 (9.3)	.071 (1.8)	
	.126 (3.2)	.250 (6.4)			.425 (10.8)	.585 (14.9)				64			64			64
	.251 (6.4)	.375 (9.5)			.550 (14.0)	.710 (18.0)				66			66			64
	.376 (9.5)	.500 (12.7)			.675 (17.2)	.835 (21.2)				68			68			
	.501 (12.7)	.625 (15.9)			.800 (20.3)	.960 (24.4)				610			610			
	.626 (15.9)	.750 (19.1)			.925 (23.5)	1.085 (27.6)				612			612			
	.751 (19.1)	.875 (22.2)			1.050 (26.7)	1.210 (30.7)				614			614			
	.876 (22.3)	1.000 (25.4)			1.175 (29.8)	1.335 (33.9)				616			616			
1/4" (6.4)	.063 (1.6)	.250 (6.4)	.257 (6.53)	.261 (6.63)	.475 (12.1)	.710 (18.0)	.151 (3.8)	.525 (13.4)	.073 (1.85)	84						
	.251 (6.4)	.375 (9.5)			.600 (15.2)	.835 (21.2)				86						
	.376 (9.5)	.500 (12.7)			.725 (18.4)	.960 (24.4)				88						
	.501 (12.7)	.625 (15.9)			.850 (21.6)	1.085 (27.6)				810						
	.626 (15.9)	.750 (19.1)			.975 (24.8)	1.210 (30.7)				812						
	.876 (22.3)	1.000 (25.4)			1.225 (31.1)	1.460 (37.1)				816						

dimensions in inches and (mm) / en pouces et (millimètre) / alle Maße in Zoll und (mm) / in pollici e (millimetri) / en pulgadas y (milímetros)

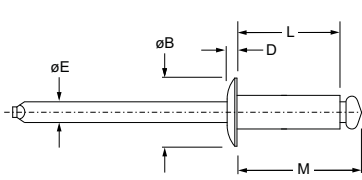
ø nom.	 lbf (kN) ²	 lbf (kN) ²
3/32" (2.4)	125 (0.57)	175 (0.78)
1/8" (3.2)	210 (0.93)	325 (1.45)
5/32" (4.0)	340 (1.51)	490 (2.18)
3/16" (4.8)	445 (1.98)	720 (3.20)
1/4" (6.4)	890 (3.96)	1200 (5.34)

2) typical values / valeurs moyennes / typische Werte / Valori tipici / valores típicos

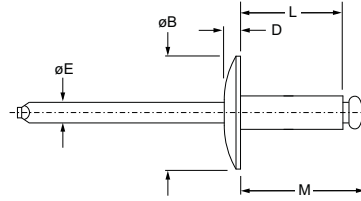


English	Français	Deutsch	Italiano	Español
Body: Steel* Zinc plated	Corps: Acier* Revêtement zingué	Hülse: Stahl* Verzinkt	Corpo: Acciaio* Zincato	Cuerpo: Acero* Zincado
Stem: Steel Protective coating	Tige: Acier Revêtement de protection	Dorn: Stahl Schutzüberzug	Gambo: Acciaio Rivestimento protettivo	Vástago: Acero Revestimiento preservador

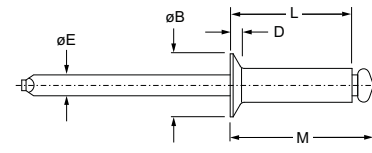
*: C1006-C1010



SD ■ BS
Dome head
Tête bombée / Flachrundkopf /
Testa tonda / Cabeza alomada



SD ■ BS LF
Large flange
Tête large / Flachrundkopf, extragroß /
Testa larga / Cabeza ancha



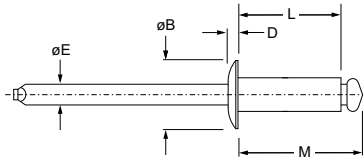
SK ■ BS
Countersunk
Tête fraisée / Senkkopf /
Testa svasata / Cabeza avellanada

Ø nom.	min. max.		min. max.		L ref.	M ref.	ØE ref.	SD ■ BS			SD ■ BS LF			SK ■ BS			
	min.	max.	min.	max.				ØB max.	D max.	Part No.	ØB max.	D max.	Part No.	ØB max.	D max.	Part No.	
3/32" (2.4)	.032 ¹⁾ (0.8) ¹⁾	.125 (3.2)	.097 (2.46)	.100 (2.54)	.225 (5.7)	.325 (8.3)	.057 (1.5)	.198 (5.1)	.032 (0.9)	32				.187 (4.8)	.039 (1.0)	32	
	.126 (3.2)	.250 (6.4)			.350 (8.9)	.450 (11.4)				34							
1/8" (3.2)	.032 (0.8)	.062 (1.6)	.129 (3.28)	.133 (3.38)	.188 (4.8)	.308 (7.8)	.076 (1.9)	.262 (6.7)	.040 (1.1)	41	.390 (10.0)	.046 (1.2)		.233 (6.0)	.051 (1.3)		
	.063 (1.6)	.125 (3.2)			.250 (6.4)	.370 (9.4)				42						42	42
	.126 (3.2)	.187 (4.8)			.313 (8.0)	.433 (11.0)				43						43	43
	.188 (4.8)	.250 (6.4)			.375 (9.5)	.495 (12.6)				44						44	44
	.251 (6.4)	.312 (7.9)			.438 (11.1)	.558 (14.2)				45							
	.313 ²⁾ (7.9) ²⁾	.375 (9.5)			.500 (12.7)	.620 (15.7)				46						46	46
	.376 (9.5)	.500 (12.7)			.625 (15.9)	.745 (18.9)				48							

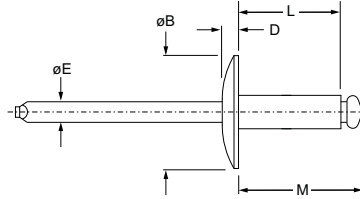
dimensions in inches and (mm) / en pouces et (millimètre) / alle Maße in Zoll und (mm) / in pollici e (millimetri) / en pulgadas y (milímetros)

1) SK 32 BS: .036 (1.6)
2) SD 46 BS LF: .251 (6.4)

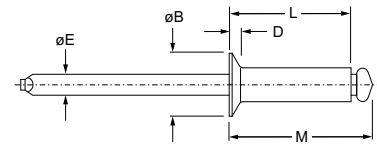
Open End SD BS / SK BS Series
Steel / Steel



SD ■ BS
Dome head
Tête bombée / Flachrundkopf /
Testa tonda / Cabeza alomada



SD ■ BS LF
Large flange
Tête large / Flachrundkopf, extragroß /
Testa larga / Cabeza ancha

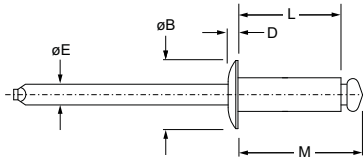


SK ■ BS
Countersunk
Tête fraisée / Senkkopf /
Testa svasata / Cabeza avellanada

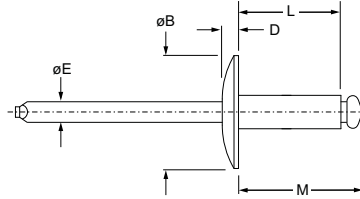
ø nom.	■		■		L ref.	M ref.	øE ref.	SD ■ BS			SD ■ BS LF			SK ■ BS			
	min.	max.	min.	max.				øB max.	D max.	Part No. ■	øB max.	D max.	Part No. ■	øB max.	D max.	Part No. ■	
5/32" (4.0)	.063 (1.6)	.125 (3.2)	.160 (4.06)	.164 (4.17)	.275 (7.0)	.415 (10.5)	.095 (2.4)	.328 (8.4)	.047 (1.2)	52	.488 (12.4)	.056 (1.5)	54	.296 (7.6)	.063 (1.6)	54	
	.126 (3.2)	.187 (4.8)			.338 (8.6)	.478 (12.1)											53
	.188 (4.8)	.250 (6.4)			.400 (10.2)	.540 (13.7)											54
	.251 (6.4)	.375 (9.5)			.525 (13.3)	.665 (16.9)											56
	.376 (9.5)	.500 (12.7)			.650 (16.5)	.790 (20.1)											58
3/16" (4.8)	.032 (0.8)	.062 (1.6)	.192 (4.88)	.196 (4.98)	.238 (6.0)	.398 (10.1)	.114 (2.9)	.393 (10.0)	.057 (1.5)	61	.650 (16.6)	.092 (2.4)	66	.363 (9.3)	.071 (1.8)	66	
	.063 (1.6)	.125 (3.2)			.300 (7.6)	.460 (11.7)											62
	.126 (3.2)	.187 (4.8)			.362 (9.2)	.522 (13.3)											63
	.188 ³⁾ (4.8) ³⁾	.250 (6.4)			.425 (10.8)	.585 (14.9)											64
	.251 (6.4)	.375 (9.5)			.550 (14.0)	.710 (18.0)											66
	.376 (9.5)	.500 (12.7)			.675 (17.2)	.835 (21.2)											68
	.501 (12.7)	.625 (15.9)			.800 (20.3)	.960 (24.4)											610
	.626 (15.9)	.750 (19.1)			.925 (23.5)	1.085 (27.6)											612
	.751 (19.1)	.875 (22.2)			1.050 (26.7)	1.210 (30.7)											614
	.876 (22.3)	1.000 (25.4)			1.175 (29.8)	1.335 (33.9)											616

dimensions in inches and (mm) / en pouces et (millimètre) / alle Maße in Zoll und (mm) / in pollici e (millimetri) / en pulgadas y (milímetros)
3) SD 64 BS LF: .126 (3.2)

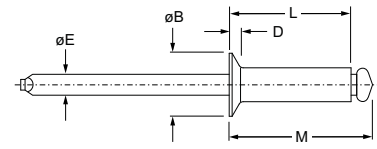
Open End SD BS / SK BS Series
Steel / Steel



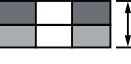

SD ■ BS
Dome head
Tête bombée / Flachrundkopf /
Testa tonda / Cabeza alomada



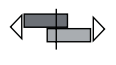

SD ■ BS LF
Large flange
Tête large / Flachrundkopf, extragroß /
Testa larga / Cabeza ancha



SK ■ BS
Countersunk
Tête fraisée / Senkkopf /
Testa svasata / Cabeza avellanada

ø nom.					L ref.	M ref.	øE ref.	SD ■ BS			SD ■ BS LF			SK ■ BS		
	min.	max.	min.	max.				øB max.	D max.	Part No. ■	øB max.	D max.	Part No. ■	øB max.	D max.	Part No. ■
1/4" (6.4)	.063 (1.6)	.250 (6.4)	.257 (6.53)	.261 (6.63)	.475 (12.1)	.710 (18.0)	.151 (3.8)	.525 (13.4)	.073 (1.85)	84						
	.251 (6.4)	.375 (9.5)			.600 (15.2)	.835 (21.2)				86						
	.376 (9.5)	.500 (12.7)			.725 (18.4)	.960 (24.4)				88						
	.501 (12.7)	.625 (15.9)			.850 (21.6)	1.085 (27.6)				810						
	.626 (15.9)	.750 (19.1)			.975 (24.8)	1.210 (30.7)				812						
	.751 (19.1)	.875 (22.2)			1.100 (27.9)	1.335 (33.9)				814						
	.876 (22.3)	1.000 (25.4)			1.225 (31.1)	1.460 (37.1)				816						

dimensions in inches and (mm) / en pouces et (millimètre) / alle Maße in Zoll und (mm) / in pollici e (millimetri) / en pulgadas y (milímetros)

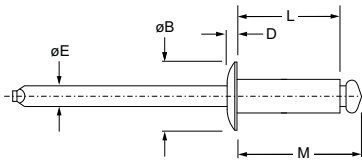
ø nom.		
	lbf (kN) ⁴⁾	lbf (kN) ⁴⁾
3/32" (2.4)	150 (0.67)	205 (0.91)
1/8" (3.2)	295 (1.31)	425 (1.89)
5/32" (4.0)	410 (1.82)	570 (2.54)
3/16" (4.8)	590 (2.62)	815 (3.63)
1/4" (6.4)	1245 (5.54)	1505 (6.69)

4) typical values / valeurs moyennes / typische Werte / Valori tipici / valores típicos

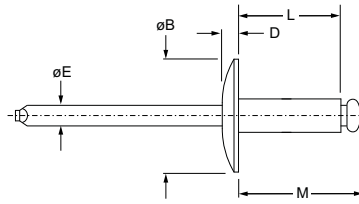


English	Français	Deutsch	Italiano	Español
Body: Stainless steel* Natural	Corps: Inox* Brut	Hülse: Edelstahl* Unbehandelt	Corpo: Acciaio inox* Nessuna finitura	Cuerpo: Acero inoxidable* Natural
Stem: Stainless steel Natural	Tige: Inox Brut	Dorn: Edelstahl Unbehandelt	Gambo: Acciaio inox Nessuna finitura	Vástago: Acero inoxidable Natural

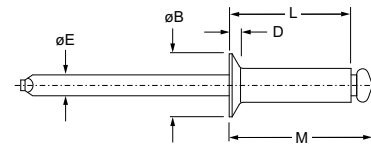
*: 300 Series



SSD ■ SSBS
Dome head
Tête bombée / Flachrundkopf /
Testa tonda / Cabeza alomada



SSD ■ SSBS LF
Large flange
Tête large / Flachrundkopf, extragroß /
Testa larga / Cabeza ancha

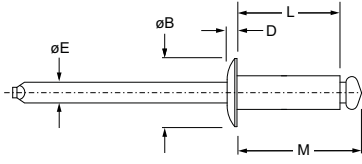


SSK ■ SSBS
Countersunk
Tête fraisée / Senkkopf /
Testa svasata / Cabeza avellanada

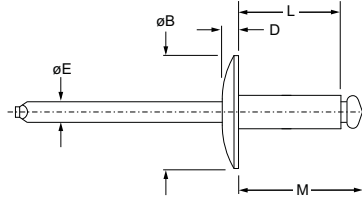
Ø nom.	Dome head		Large flange		L ref.	M ref.	ØE ref.	SSD ■ SSBS			SSD ■ SSBS LF			SSK ■ SSBS				
	min.	max.	min.	max.				ØB max.	D max.	Part No.	ØB max.	D max.	Part No.	ØB max.	D max.	Part No.		
3/32" (2.4)	.063 (1.6)	.125 (3.2)	.097 (2.46)	.100 (2.54)	.240 (6.1)	.340 (8.6)	.057 (1.5)	.198 (5.1)	.032 (0.9)	32								
1/8" (3.2)	.032 (0.8)	.062 (1.6)	.129 (3.28)	.133 (3.38)	.188 (4.8)	.308 (7.8)	.076 (1.9)	.262 (6.7)	.040 (1.1)	41	.390 (10.0)	.046 (1.2)	44	.233 (6.0)	.051 (1.3)	44		
	.063 (1.6)	.125 (3.2)			.250 ¹⁾ (6.4 ¹⁾)	.370 (9.4)				42							42	42
	.126 (3.2)	.187 (4.8)			.313 (8.0)	.433 (11.0)				43							43	43
	.188 (4.8)	.250 (6.4)			.375 (9.5)	.495 (12.6)				44							44	44
	.251 (6.4)	.312 (7.9)			.438 (11.1)	.558 (14.2)				45								
	.313 (7.9)	.375 (9.5)			.500 (12.7)	.620 (15.7)				46								
	.376 (9.5)	.500 (12.7)			.625 (15.9)	.745 (18.9)				48								
5/32" (4.0)	.063 (1.6)	.125 (3.2)	.160 (4.06)	.164 (4.17)	.275 (7.0)	.415 (10.5)	.095 (2.4)	.328 (8.4)	.047 (1.2)	52								
	.126 (3.2)	.187 (4.8)			.338 (8.6)	.478 (12.1)				53								
	.188 (4.8)	.250 (6.4)			.400 (10.2)	.540 (13.7)				54								
	.251 (6.4)	.375 (9.5)			.525 (13.3)	.665 (16.9)				56								

dimensions in inches and (mm) / en pouces et (millimètre) / alle Maße in Zoll und (mm) / in pollici e (millimetri) / en pulgadas y (milímetros)
1) SSK 42 SSBS: .275 (7.0)

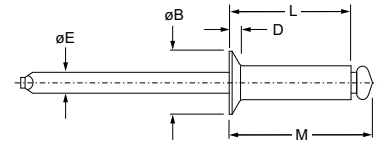
Open End SSD SSBS / SSK SSBS Series
Stainless Steel / Stainless Steel



SSD ■ SSBS
Dome head
Tête bombée / Flachrundkopf /
Testa tonda / Cabeza alomada



SSD ■ SSBS LF
Large flange
Tête large / Flachrundkopf, extragroß /
Testa larga / Cabeza ancha



SSK ■ SSBS
Countersunk
Tête fraisée / Senkkopf /
Testa svasata / Cabeza avellanada

ø nom.					L ref.	M ref.	øE ref.	SSD ■ SSBS			SSD ■ SSBS LF			SSK ■ SSBS			
	min.	max.	min.	max.				øB max.	D max.	Part No. ■	øB max.	D max.	Part No. ■	øB max.	D max.	Part No. ■	
3/16" (4.8)	.063 (1.6)	.125 (3.2)	.192 (4.88)	.196 (4.98)	.300 (7.6)	.460 (11.7)	.114 (2.9)	.393 (10.0)	.055 (1.4)	62	.650 (16.6)	.083 (2.2)	68	.363 (9.3)	.071 (1.8)	68	
	.126 (3.2)	.250 (6.4)			.425 (10.8)	.585 (14.9)				64							64
	.251 (6.4)	.375 (9.5)			.550 (14.0)	.710 (18.0)				66							66
	.376 (9.5)	.500 (12.7)			.675 (17.2)	.835 (21.2)				68							68
	.501 (12.7)	.625 (15.9)			.800 (20.3)	.960 (24.4)				610							610
	.626 (15.9)	.750 (19.1)			.925 (23.5)	1.085 (27.6)											612
	.876 (22.3)	1.000 (25.4)			1.170 (29.7)	1.335 (33.9)				616							

dimensions in inches and (mm) / en pouces et (millimètre) / alle Maße in Zoll und (mm) / in pollici e (millimetri) / en pulgadas y (milímetros)

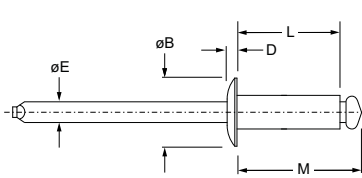
ø nom.		
	lbf (kN) ²⁾	lbf (kN) ²⁾
3/32" (2.4)	230 (1.02)	280 (1.25)
1/8" (3.2)	550 (2.45)	700 (3.12)
5/32" (4.0)	900 (4.01)	1130 (5.03)
3/16" (4.8)	1000 (4.45)	1375 (6.12)

2) typical values / valeurs moyennes / typische Werte / Valori tipici / valores típicos

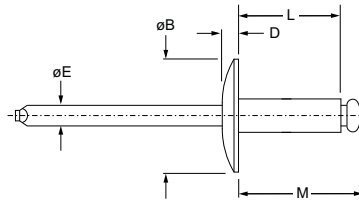


English	Français	Deutsch	Italiano	Español
Body: Stainless steel* Natural	Corps: Inox* Brut	Hülse: Edelstahl* Unbehandelt	Corpo: Acciaio inox* Nessuna finitura	Cuerpo: Acero inoxidable* Natural
Stem: Steel Protective coating	Tige: Acier Revêtement de protection	Dorn: Stahl Schutzüberzug	Gambo: Acciaio Rivestimento protettivo	Vástago: Acero Revestimiento preservador

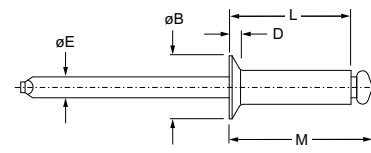
*: 300 Series



SSD ■ BS
Dome head
Tête bombée / Flachrundkopf /
Testa tonda / Cabeza alomada



SSD ■ BS LF
Large flange
Tête large / Flachrundkopf, extragroß /
Testa larga / Cabeza ancha



SSK ■ BS
Countersunk
Tête fraisée / Senkkopf /
Testa svasata / Cabeza avellanada

ø nom.	■		■		L ref.	M ref.	øE ref.	SSD ■ BS			SSD ■ BS LF			SSK ■ BS		
	min.	max.	min.	max.				øB max.	D max.	Part No.	øB max.	D max.	Part No.	øB max.	D max.	Part No.
1/8" (3.2)	.032 (0.8)	.062 (1.6)			.188 (4.8)	.308 (7.8)										
	.063 (1.6)	.125 (3.2)			.250 ¹⁾ (6.4) ¹⁾	.370 (9.4)							42			42
	.126 (3.2)	.187 (4.8)			.313 (8.0)	.433 (11.0)							43			43
	.188 (4.8)	.250 (6.4)	.129 (3.28)	.133 (3.38)	.375 (9.5)	.495 (12.6)	.076 (1.9)	.262 (6.7)	.040 (1.1)	44	.390 (10.0)	.046 (1.2)	44	.233 (6.0)	.051 (1.3)	
	.251 (6.4)	.312 (7.9)			.438 (11.1)	.558 (14.2)				45						
	.313 (7.9)	.375 (9.5)			.500 (12.7)	.620 (15.7)				46						
	.376 (9.5)	.500 (12.7)			.625 (15.9)	.745 (18.9)				48						
5/32" (4.0)	.063 (1.6)	.125 (3.2)			.275 (7.0)	.415 (10.5)				52						
	.188 (4.8)	.250 (6.4)	.160 (4.06)	.164 (4.17)	.400 (10.2)	.540 (13.7)	.095 (2.4)	.328 (8.4)	.047 (1.2)	54						
	.251 (6.4)	.375 (9.5)			.525 (13.3)	.665 (16.9)				56						

dimensions in inches and (mm) / en pouces et (millimètre) / alle Maße in Zoll und (mm) / in pollici e (millimetri) / en pulgadas y (milímetros)
1) SSK 42 BS: .275 (7.0)